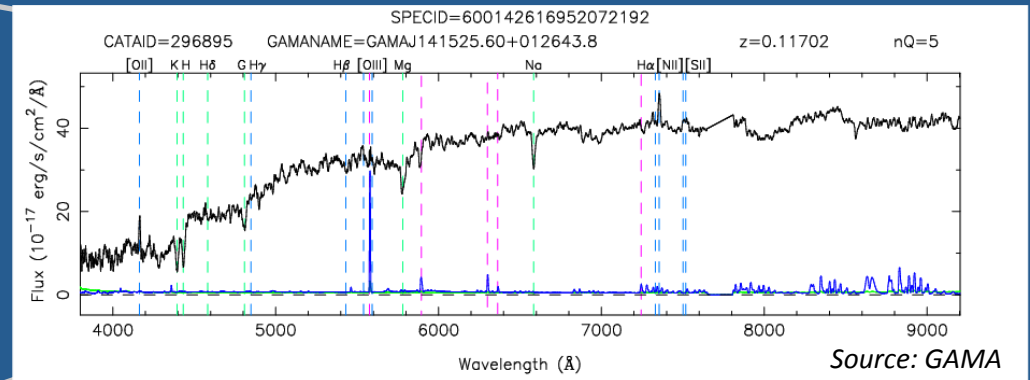
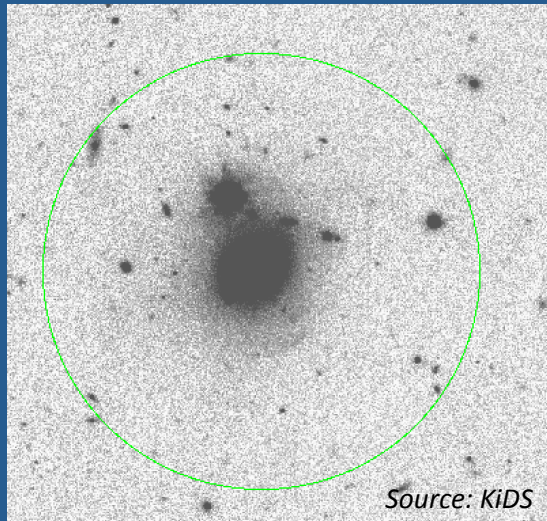


Are Low Excitation Radio Galaxies Fuelled by Minor-Mergers?

Y.A. Gordon, K.A. Pimblet, M.S. Owers, GAMA team



- 18 LERGs with $z < 0.12$ selected from GAMA and FIRST (Becker+95, Liske+15) and classified using a combination of BPT and Best & Heckman (2012) radio luminosity and D4000 strength.
- If minor mergers a trigger, an excess of low mass satellites may result in more minor mergers occurring in LERG hosts. No such excess detected relative to a control sample (see right).
- In the event of prior minor merger, faint morphological signatures may be present. Currently pursuing this using imaging from the Kilo Degree Survey (de Jong+13).

